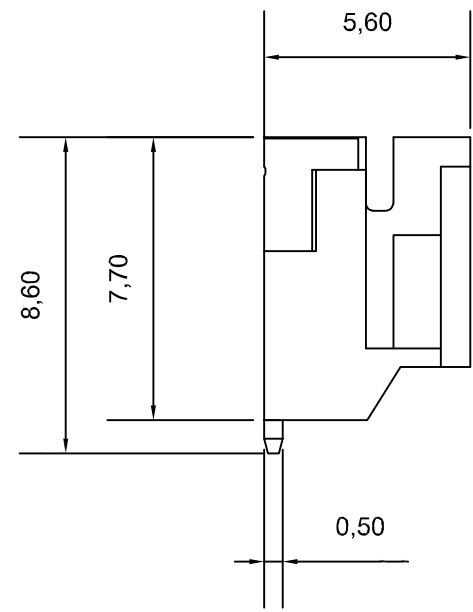
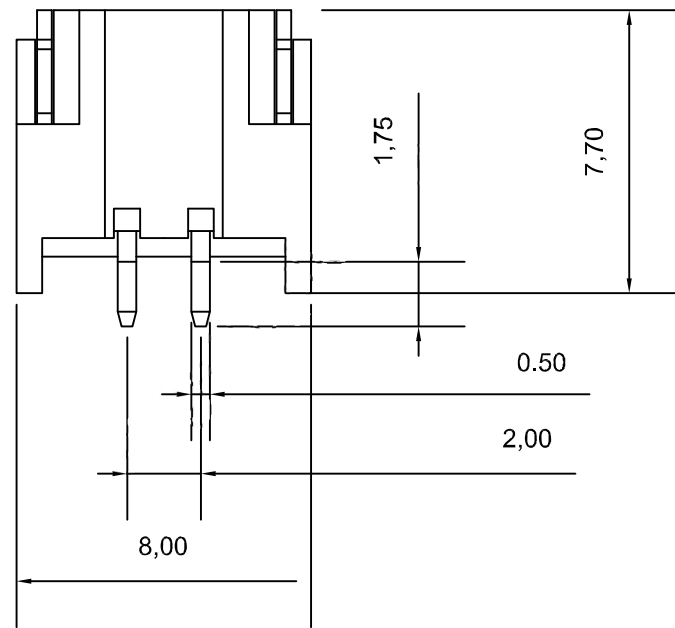
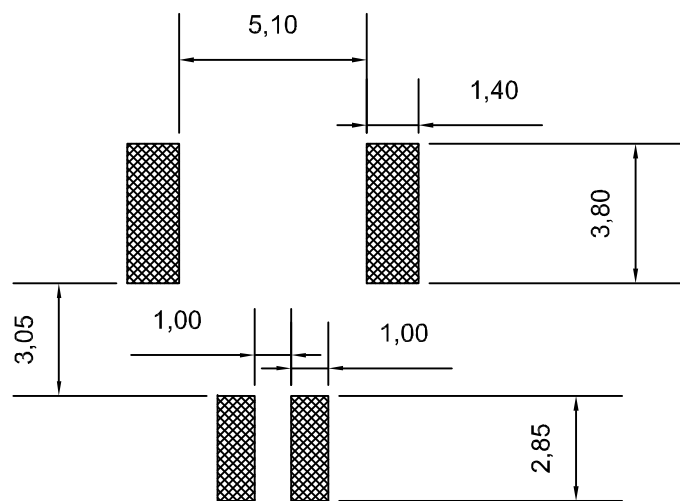


# 2 PINS 2.0 Pitch SMD Horizontal Type

Ver	Date	Description
1.0	July-26-2012	Preliminary Release


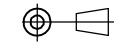


## PCB LAYOUT



### Electrical Performance:

- Rated Current: 2.0A
- Rated Voltage: 50V
- Dielectric: 1000V
- Insulation Resistance: 1000M  $\Omega$
- Contact Resistance: 30m  $\Omega$
- Operating Temp: -20 $^{\circ}$ C ~ +85 $^{\circ}$ C
- Plastic Material: PA66, UL94V-0
- Pin Material: Phosphor Bronze

 Next Vision Display Brighten The Future		CD
	UNIT: MM	SIZE: A4
	SHEET: 1 OF 1	
Part Number for Order: NV2.0-2P-SMD BACKLIGHT CONN.		
DPAWN BY : Jim	CHECKED BY: Tony	APPROVED BY : Liu